

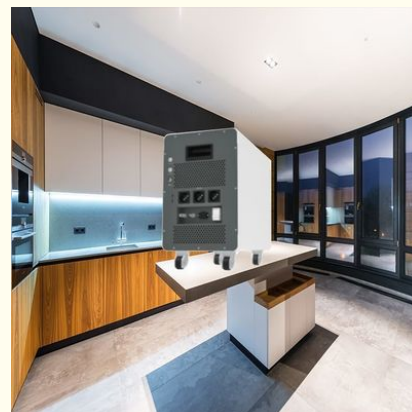


Residential All In One Lithium Battery With 5kw Inverter 100Ah 200Ah

Our Product Introduction

Basic Information

- Place of Origin: China
- Brand Name: XWELL
- Certification: UN38.3, MSDS, UL, CB, BIS, PSE, GB4943.1 safety standard, CE, FCC, ROHS, battery UN38.3, MSDS, UL, CB, BIS, PSE
- Model Number: XW-3200W
- Minimum Order Quantity: 1 pcs
- Packaging Details: Carton
- Delivery Time: 7-10 working days
- Payment Terms: L/C, D/A, D/P, T/T, Western Union, MoneyGram
- Supply Ability: 5000 pcs per month



Product Specification

- DC Voltage: 51.2V
- Capacity: 100Ah 200Ah
- Energy: 5.0kwh 10.0kwh
- Battery Type: LiFePO4 Cell
- Life Time: 6000 Cycles
- Max Charge Current: 50A
- Max Discharge Current: 100A
- Inverter Rated Power: 3.2kw
- Peak Power: 5kw
- Output Wave Form: Pure Sine Wave
- Highlight: **Residential All In One Lithium Battery, 5kw All In One Lithium Battery, 200Ah All In One Lithium Battery**

for more products please visit us on esslithiumbattery.com

Product Description

All-In-One Lithium Battery System LiFePO4 Battery Pack Solar Li-Ion Batteries With 5kw Inverter For Residential

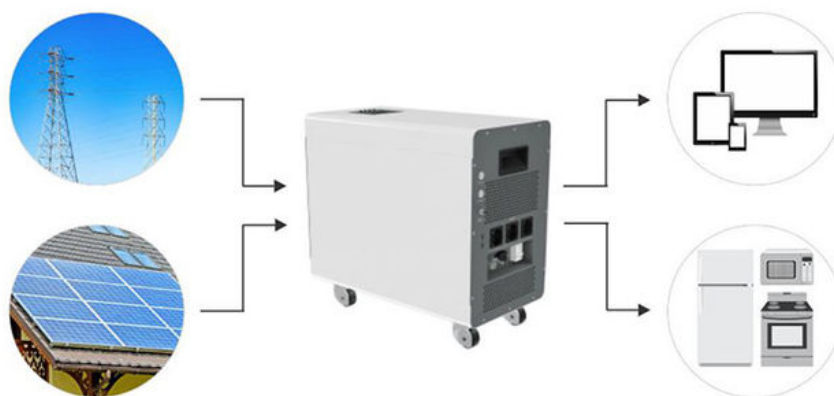
All In One Energy Storage System Feature

1. Integrated MPPT charge controller.
2. Equalization charging function.
3. Maximum PV input voltage up to 450VDC.
4. Support parallel operation for capacity expansion up to 80kW.
5. Flexibly schedule the Inverter charging and discharging time.
6. Configurable grid or solar input priority.
7. Optional WIFI/ GPRS remote monitoring.

All in One Energy Storage System Specification

Battery Parameters		
Model	51.2V100Ah	51.2V200Ah
Nominal voltage	51.2V	
Nominal capacity (kwh)	5KWh	10KWh
Cell type	LiFePO4	
Cycle life	>6000 Cycles(80%DOD)	
Charge temperature range	0~65°C	
Discharge temperature range	-20~65°C	
Maximum continuous charge current	50A	
Maximum continuous discharge current	100A	
Color	Black /White	
Dimension (mm)	710x300x600	710x300x800
Weight	81Kg	110Kg
Installation method	Floor type with wheels	
Inverter Parameters		
Rated power	3.2KW	
Peak power	5KW	
Output wave form	Pure sine wave	
Input/Output AC voltage	AC 110V/220V	
Input/Output AC voltage frequency	50Hz/60Hz	

All in One Energy Storage System Connection Diagram



FAQ

1. What is your MOQ (Minimum Order Quantity)?
Sample order for testing is available. You can choose to place just one piece for testing.
2. What is the warranty term of your product?
Xwell standard warranty term is 3 years. Besides, warranty is extending available according to customers' requirements.
3. What about the lead time of bulk order?
It depends on the order quantity. Normally, the lead time is around 30 days.
4. What shipping method can I choose? How about the shipping time?
Our sales person will recommend the most suitable solution to you according to your detailed order and situation.
5. What is the payment term of the order?
T/T 30% as deposit, T/T 70% before shipment, other payment terms can be discussed according to the order quantity.

Our services

1. Your inquiry related to our products price will be replied in 24 hours.
2. Experienced staffs to answer all your enquiries in fluent English
3. We make the OEM and ODM service for more than 5 years
4. Protection of your sales area, ideas of design and all your private information.
5. No matter big order or small order, we will provide all the best quality, best service.
6. If our products have any problem that we caused, they will be sent free in the next order.



XWELL GUANGDONG XWELL TECHNOLOGY CO., LTD.

+86 18620492985

sales@esslithiumbattery.com

esslithiumbattery.com

Room 322, Building 3, No. 801, Qiaoxing Avenue, Xiaoluo Village, Shatou Street, Panyu District, Guangzhou, China